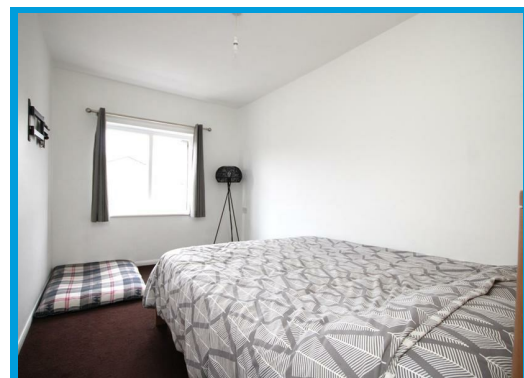
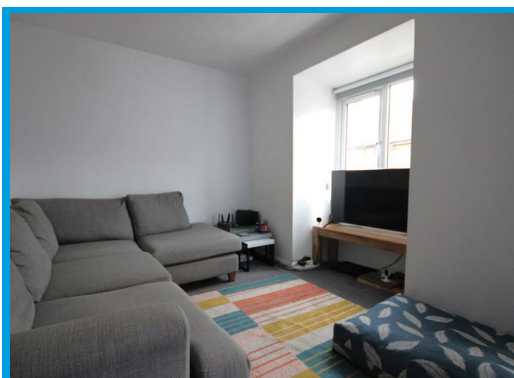
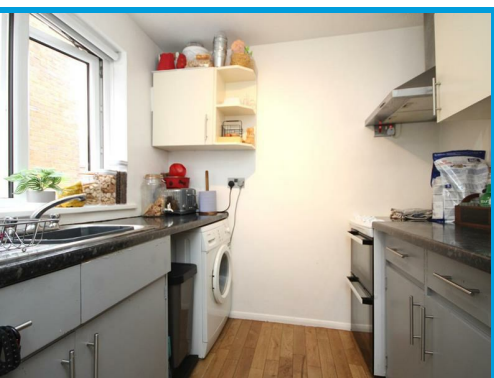




Drummond Road, Guildford, Surrey GU1 4NT

£1,550 PCM

Located in the heart of Guildford town centre, this two double bedroom apartment is arranged over two floors and offers spacious and well presented accommodation within moments walk of Guildford mainline station.



Description

A well presented and spacious two double bedroom apartment located in a highly popular town centre location. Arranged over two floors, the accommodation is accessed through its own private entrance and the first floor comprises a modern kitchen with appliances, a large lounge and ample storage. On the second floor the property boasts two double bedrooms and a bathroom with shower. The property further features off street parking and is within moments of Guildford High street and mainline station.

